

Percussion

Solo Repertoire

Own Choice

Orchestral Repertoire

(details see music provided)

Snare Drum

Prokofiev

Lieutenant Kijé Suite No.1(Reh.1 - 9)

Rimsky-Korsakov

Scheherazade (3rd movement, 4th movement)

Shostakovich

Symphony No.10 (2nd movement , Reh.98 - End)

Xylophone

Copland

Appalachian Spring (Reh.48 - 50)

Gershwin

Porgy and Bess (Reh.13 - 15)

Kabalevsky

Colas Breugnon Overture

Glockenspiel

Dukas

Sorcerer's Apprentice (Reh.17 - 19, 22 - 24, 26)

Mozart

The Magic Flute No.8 Finale

Respighi

Pines of Rome (Beginning - Reh.4)

Tambourine

Bizet

Carmen Suite No.1 (No.1a, Aragonaise, Beginning - Reh.8)

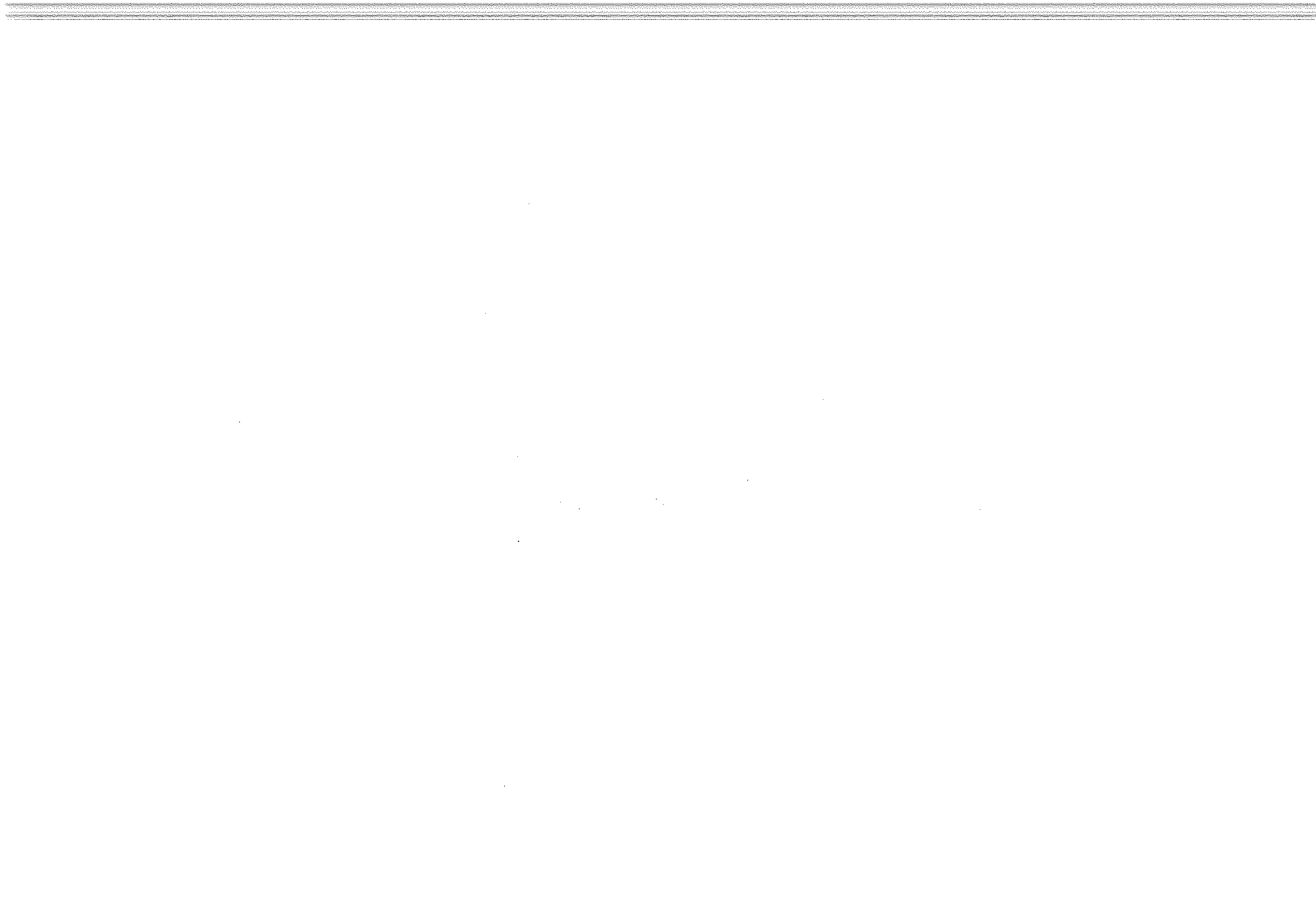
Carmen Suite No.2 (No 11, Danse Bohème,
measure 3 before Reh.D - measure 2 after Reh.F)

Dvořák

Carnival Overture

Stravinsky

Petrouchka (Reh.201 - 209)



Cymbal

Rachmaninoff
Tchaikovsky
Tchaikovsky

Piano Concerto No.2 (3rd movement, Beginning - Reh.32)
Romeo and Juliet Overture (Reh.E - Reh.N)
Symphony No.4 (measure 263 - 268, measure 272 - 292)

Bass Drum

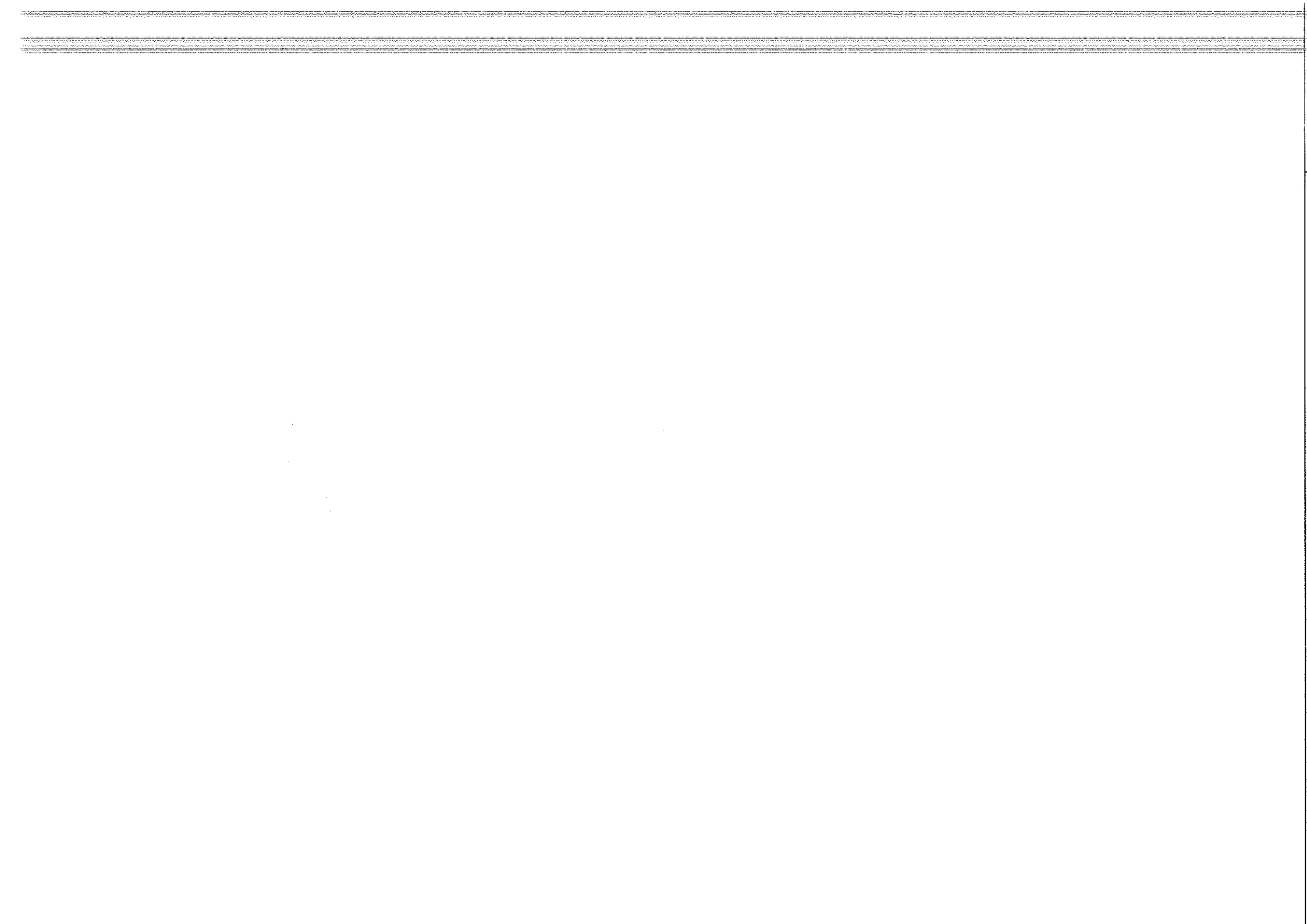
Mahler
Stravinsky

Symphony No.3 (1st movement Beginning - Reh.11)
Rite of Spring (Reh.72 - 78)

Triangle

Brahms
Liszt

Symphony No.4 (Reh.C with upbeat - 6 measures after Reh.C,
Reh.D, Reh.I)
Piano Concerto No.1 (Reh.E - H)



„ПОРУЧИК КИЖЕ“
СИМФОНИЧЕСКАЯ СЮИТА

„LIEUTENANT KIJÉ“
SUITE SYMPHONIQUE

Tamburo militare, Piatti e Tamburino

СЕРГЕЙ ПРОКОФЬЕВ
SERGE PROKOFIEFF Op.

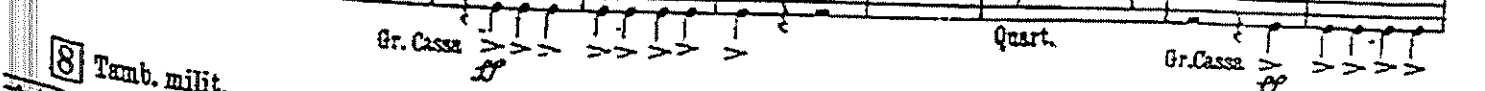
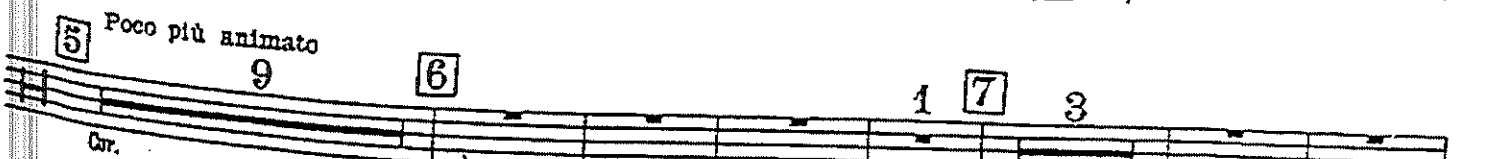
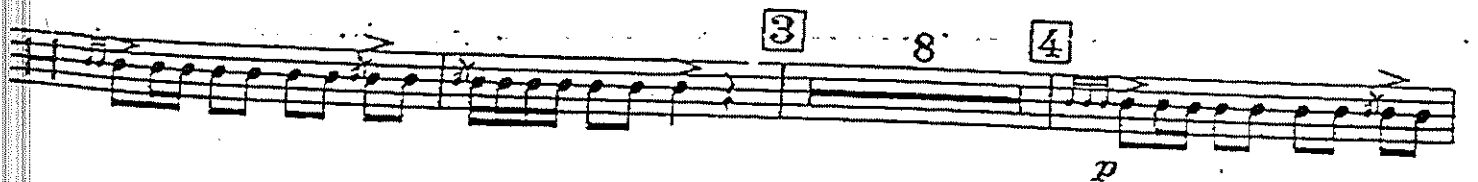
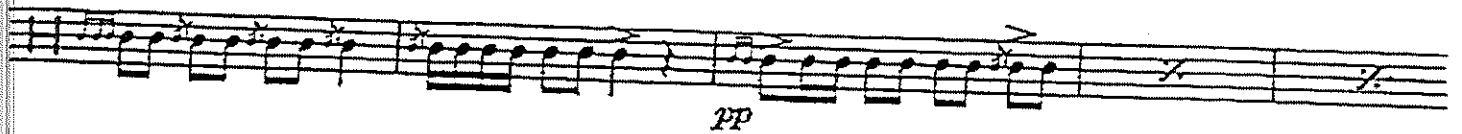
РОЖДЕНИЕ КИЖЕ № 1

NAISSANCE DE KIJÉ

Andante assai
5

$\text{♩} = 118$

rit. 1 Doppio movimento
Tamb. milit. Solo



SCHEHERAZADE.

Suite symphonique.

Tambur piccolo.

I. II. tacet.

III.

N. Rimsky - Korsakow, Op. 35.

Andantino quasi Allegretto.

24 A 24 B 14 C

Viol. I.

pocchiss. più mosso
p *dim.*
ppp *pocchiss. cresc.*
pp
p
p *f*
p *f*
Lento. Recit. Tempo I.
Viol. Solo. Cad.
pocchissimo più animato *rit. molto* *pp*
allarg. a tempo assai

Tambur piccolo.

IV.

Allegro molto. Recl. Lento. Allegro molto e frenetico.

G.P. G.P. Viol.Solo.

Lento. Recl. Vivo. Trilauk.

Viol.Solo.

mf f pp f

mf cresc. f pp

Tamburico.

♩ = 85 ♩ = 170

Tambur piccolo.

1 1 1 Q

mf

R

15 S

f > p f

3 T 1 2 3 4 1 2 3 4 5

mf dim. pp

6 7 8 9 10 11 12 13 14 15 U 16 V 28

Plù stretto.

7 7 3 2 3

f f f f

2 2

f f f f

W Spiritoso.

14 1

3 3

mf cresc. f

Allegro non troppo e maestoso.

11 X 6 13 Y 18 Z 6

Lento. Recit. Alla breve. a tempo

3 10 1 4

Viol Solo. Ind.

Shostakovich Symphony No. 10

2 Movement *t. mil.*

97 10 98 Solo f

ff

99

ffff

APPALACHIAN SPRING

Aaron Copland

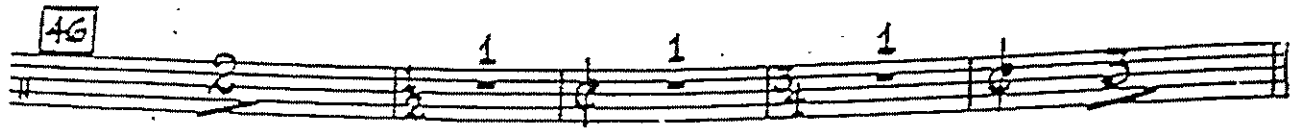
Percussion

Xylophone

Green IP 904

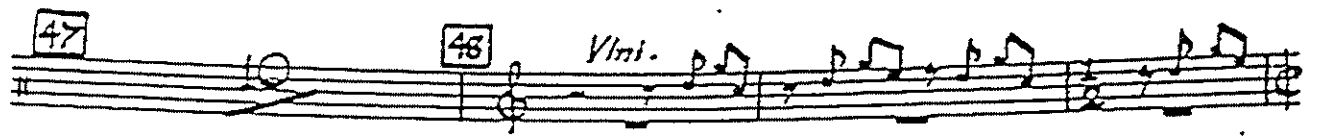
$\text{♩} = 90$ hard stick

46

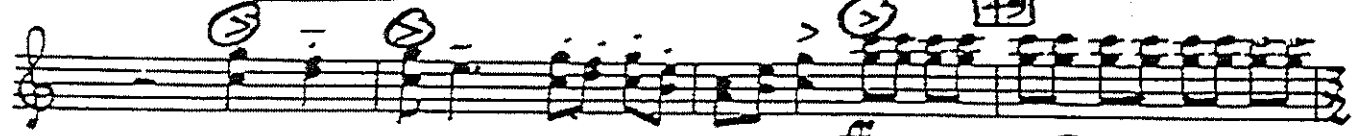


47

48 Vlni.

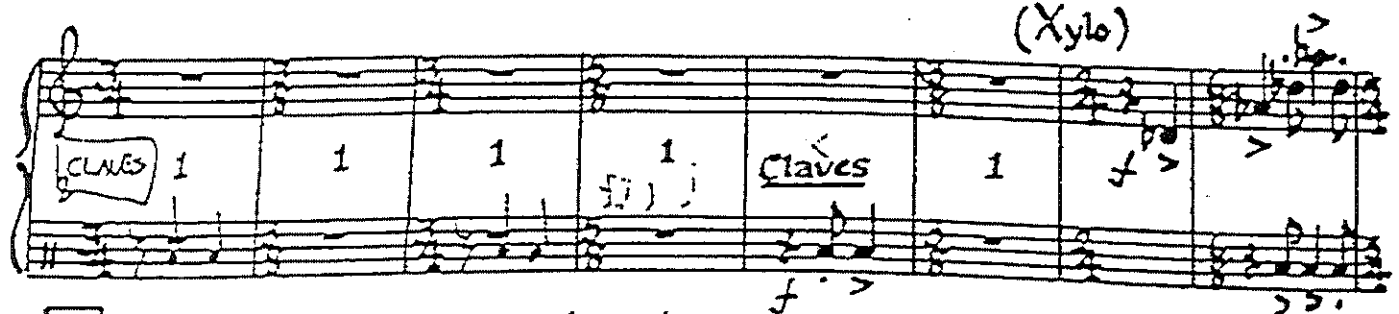


Xylo: *secco ff*



(Xylo)

CLAVES 1 1 1 1 Claves 1 *f*



50 *to B* More deliberate tempo rit. *Meno Mosso* 51



PORGY AND BESS

Xylophone, Bells, Chime.
Triangle, Drums, Cymb.
Wood Block * TOMTOM + SD

A Symphonic Picture

GEORGE GERSHWIN
For Orchestra by Russell Bennett
Add Orch. Schweidman

KÖVAN

1 $\text{♩} = 56$ 2 $\text{♩} = 60$ 3 4 *Lento*

5 *sempre lento* 6 *Sostenuto*

7 *Andantino dolente* 8 *poco accel.* 9 *Allegretto tempo* 10 11 12 *Chime p* 2 *rall.*

13 *Con briog* Triangle Cymbals Xylophone (8=)

$\text{♩} = 126$

Xylo. Wood Block

15

Lophone

Overture "Colas Breugnon"

Dmitri Kabalensky

Op. 24

legro

2 7 6 A B^b A G F E 2 ① *Presto* 12 ② 9

7 ④ 5 ⑤ 12 ⑥ 9 ⑦ 7 ⑧ 5 ⑨ 1 R

SD *Imp* *for.* SD 5 *crex*

⑩ R *8*

⑪ *8*

⑫ 7 ⑬ 7 ⑭ 5 ⑮ 11 ⑯ 11

⑰ 8 ⑱ D^b 2 3 4 5 6 7 8 9 10 11 12 ⑲

G[#] F[#] E[#] C[#] D[#] E[#] F[#] G[#] A B C[#] ⑳

7 ㉑ 8 ㉒ 12 ㉓ 8 ㉔ 10 ㉕ 16 ㉖ 10

㉗ *Litesso tempo* ㉘ 8 ㉙ 12 ㉚ 10 ㉛ 6 ㉜ 6

Horn

㉝ 8 ㉞ 4 *Presto* ㉟ 10 ㊱ 7

U.S.

Xylophone

36 *mf*

37 7 38 6

39

40

cresc 41 7 42 7 43 7 44 2

45 7 46 8 47 8 48 8 49 8 50 8 51 5

52 8 53 11 54 8 55 12 56 4 4 57 L

58

59 2 60 2

R R

APPRENTICE

Scherzo

$\text{♩} = 120$

PAUL DU

GLOCKENSPIEL.

Assez lent

Vif

1^{re} Mouvt

Musical notation for measures 1 through 15. Measure numbers 1 through 15 are boxed. The notation includes notes, rests, and dynamic markings such as 'Vif' and 'silence'. Measure 15 ends with a fermata.

Musical notation for measures 16 and 17. Measure 16 is marked '16' and '12'. Measure 17 is marked '17' and 'Altus Sali'. A double bar line with a repeat sign follows. The tempo changes to $\text{♩} = 120$.

$\text{♩} = 120$

GLOCK.

p détache

Musical notation for measures 18 and 19. Measure 18 is marked '18' and 'A.'. Measure 19 is marked '19'. Dynamics include 'cresc.', 'f', and 'rinf'.

Musical notation for measures 20 and 21. Measure 20 is marked '20' and '2'. Measure 21 is marked '21' and '6'. Dynamics include 'rinf. più f' and 'sempre cresc.'.

Poco animato Più animando

Musical notation for measures 22 and 23. Measure 22 is marked '22' and '2'. Measure 23 is marked '23'. Dynamics include 'f'.

$\text{♩} = 110$

22 Au Mouvt (Brass mallet's)

GLOCK.

Musical notation for measures 24 and 25. Measure 24 is marked '24'. Measure 25 is marked '25'. Dynamics include 'ff'.

Musical notation for measures 26 and 27. Measure 26 is marked '26'. Measure 27 is marked '27'.

23

Musical staff with notes and slurs.

Musical staff with notes and slurs.

24

25

Poco string. A tempo

Musical staff with notes, slurs, and a double bar line.

26

Scherzando
CLOCK.

Musical staff with notes, slurs, and a double bar line.

27

28

String. A tempo

29

Musical staff with notes, slurs, and a double bar line.

30

Musical staff with notes, slurs, and a double bar line.

31

Musical staff with notes, slurs, and a double bar line.

32

33

34

35

36

Musical staff with notes, slurs, and a double bar line.

37

38

Plus animé

Musical staff with notes, slurs, and a double bar line.

to INSERT

CLOCK.

Musical staff with notes, slurs, and a double bar line.

39

Musical staff with notes, slurs, and a double bar line.

Glockenspiel

No. 8, Finale
from Act I of the Opera
The Magic Flute

W. A. Mozart
(1756-1791)

Allegro

28

The image displays a musical score for a Glockenspiel. It consists of nine staves of music, each containing a single melodic line. The notation is in treble clef with a common time signature (C). The tempo is marked 'Allegro'. The score begins with a measure number '28'. The music features a rhythmic pattern of eighth and sixteenth notes, with some measures containing beamed eighth notes. The piece concludes with a final note marked with a fermata.

PINI DI ROMA

2nd UT 3rd Mallet OUT!!! I. I pini di Villa Borghese

CAMPANELLI

6uu↓
Allegretto vivace

ff

ff

mf cresc.

f

f

p

f

ff

ff

ff

Carmen Suite No. 1

1

ambourine
Triangle
Bass Drum
Cymbals

STANFORD MUSIC CENTER
LIBRARY

Tamburino, Triangolo, Gr. Cassa e Piatti.

N° 1. Prélude.

Georges Bizet

Andante moderato. ($\text{♩} = 58$)

(Prelude to Act I)

Musical score for N° 1. Prélude. The score is written for Tamburino, Triangolo, Gr. Cassa, and Piatti. It begins with a dynamic marking of *ff* and a tempo of Andante moderato ($\text{♩} = 58$). The score includes measures 2, 3, 4, 18, 19, 20, 21, and 22. Measure 18 is marked with *Fag. I. cresc.* and *molto*. Measure 22 is marked with *Gr. Cassa.* and *Piatti.* The piece concludes with an *attacca* marking.

N° 1^a Aragonaise.

(Prelude to Act IV)

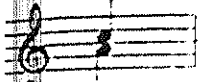
Allegro vivace. ($\text{♩} = 80$)

Musical score for N° 1^a Aragonaise. The score is written for Tamburino, Triangolo, and Gr. Cassa e Piatti. It begins with a dynamic marking of *ff* and a tempo of Allegro vivace ($\text{♩} = 80$). The score is divided into sections A and B. Section A includes measures 6 and 7, with dynamics of *dim. molto* and *p*. Section B includes measures 6, 7, and 8, with dynamics of *pp*, *f*, *p*, *f*, *dim.*, and *pp*. The piece concludes with a *poco cresc.* marking.

CARNIVAL OVERTURE

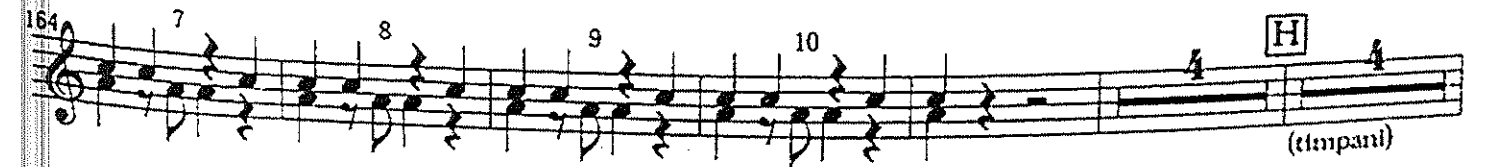
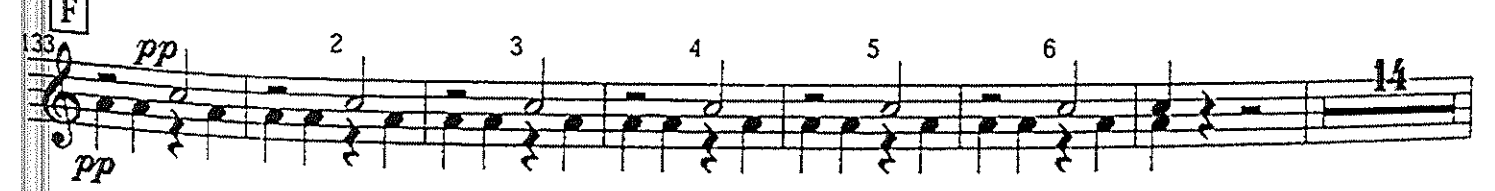
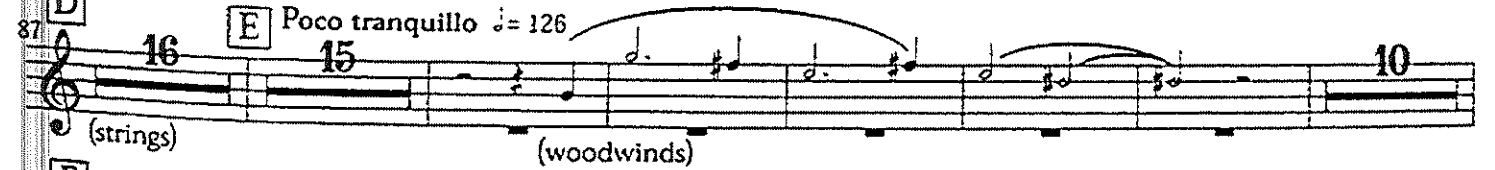
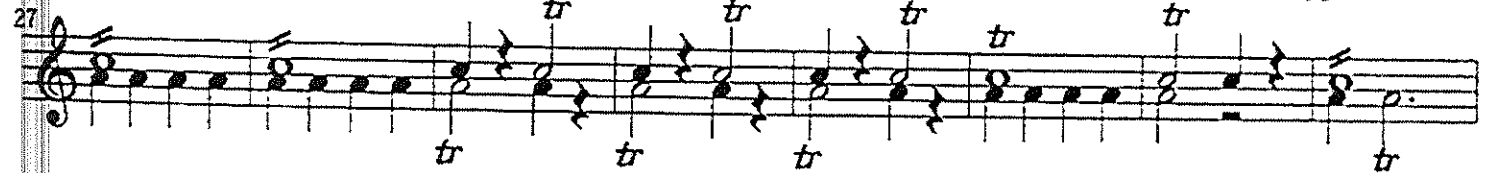
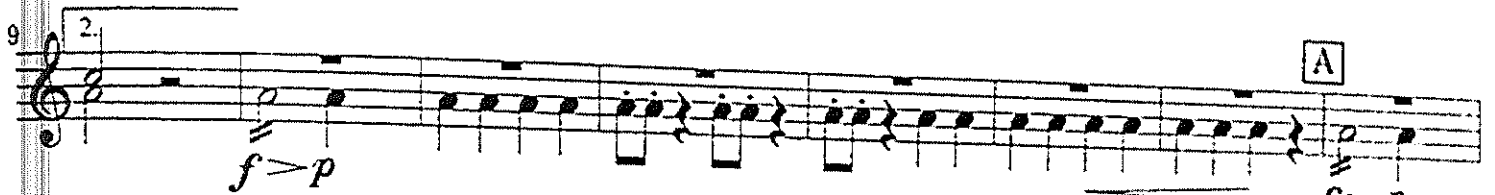
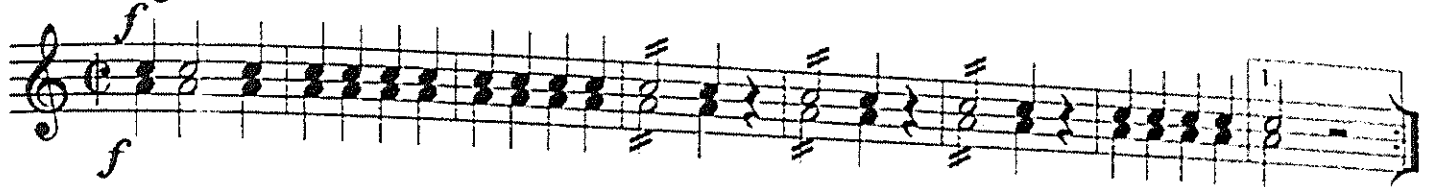
Antonín Dvořák
(1841-1904)

Triangle



Tambourine

Allegro $\text{♩} = 132$



(timpani)

Tambourines.

PETROUCHKA

IGOR STRAWINSKY

GYPSIES AND A RAKE VENDOR

196 Strgs. *ff*

197

198 3 *d=d*

199 S.D. *sf* *d=138*

200 3 2

201 1 2 *amb. trum trum A*

202 1

203 *trum trum*

204 *trum trum*

sempre sim.

205 *d=d. d.=60*

206 *A trum trum A trum*

207 2 3

208 3

209 S.D. *shake thumb shake thumb.*

210 3 4

211 4

212 2 *ritard.*

sf

d=d

PIANO CONCERTO No. 2

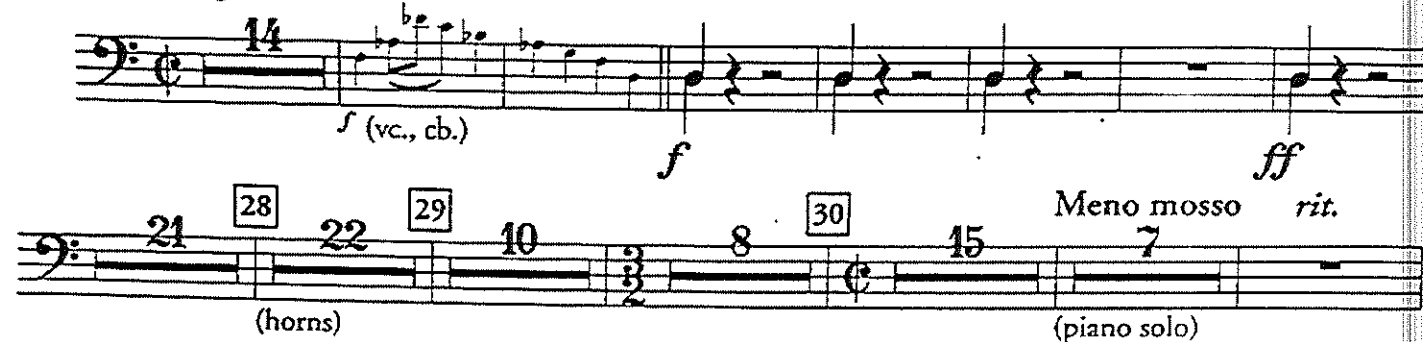
Sergei Rachmaninov
(1873-1943)

Piatti
Gran cassa



I. II. - TACET III.

Allegro scherzando $\text{♩} = 116$



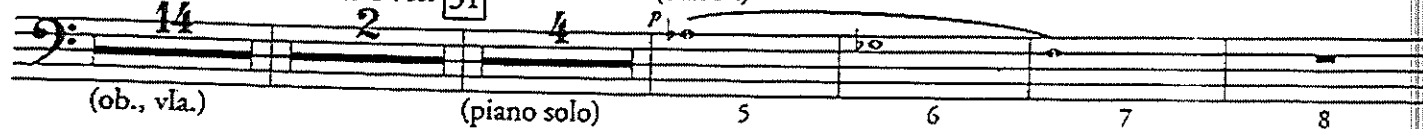
f (vc., cb.) *f* *ff*

21 22 28 29 10 8 30 15 7

(horns) (piano solo)

Meno mosso *rit.*

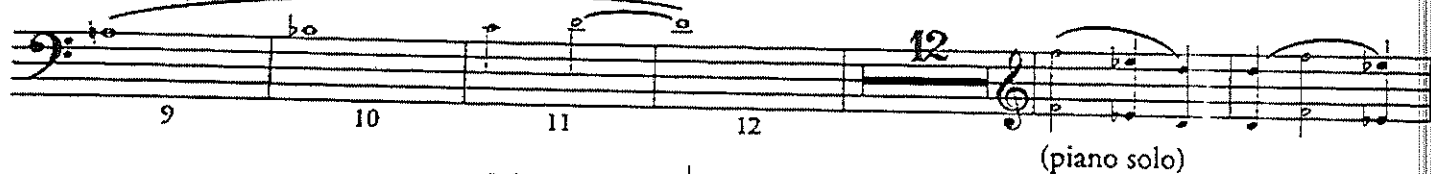
Moderato $\text{♩} = 72$ *dim e rit.*



14 2 4 31 5 6 7 8

(ob., vla.) (piano solo) (basson)

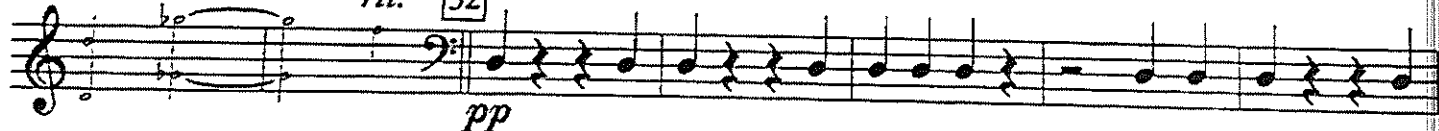
(basson)



9 10 11 12 12

(piano solo)

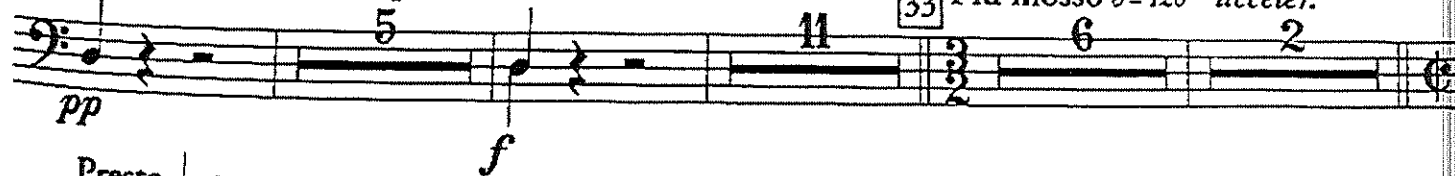
rit. 32 *Meno mosso* $\text{♩} = 48$



pp

ritard.

Allegro scherzando (Moto primo) $\text{♩} = 116$




pp *f*

5 11 33 6 2

Più mosso $\text{♩} = 120$ *acceler.*

Presto $\text{♩} = 126$



ff *pp*

20 2 34 42

(timpani) (timpani) (1st violins)

ROMEO AND JULIET

OVERTURE - FANTASY

Peter Tchaikovsky
(1840-1893)

Piatti
Gran cassa

Andante non tanto
quasi Moderato

poco a poco
string. accel.

20 17 A 23 B 17 C 8 4

(strings pizz.) (vc.)

Allegro 6 Molto meno mosso 10 string. 6 Allegro giusto D 10 13 7

(timpani) (timpani)

(trumpets)

E

f mf

2 f ff f ff

4 F 22

21 H 19 I 19 J 30 K 27

(English horn) (harp) (strings)

20 M 5 6 7 8 9

(vc., cb.) (4th horn)

10 11 N ff ff

Triangel, Becken u. Gr. Trummel

257 H

sempre fff

sempre fff

Detailed description: This system contains measures 257 to 262. It features two staves. The upper staff has a treble clef and contains a melodic line with eighth and sixteenth notes. The lower staff has a bass clef and contains a rhythmic accompaniment with eighth notes. The dynamic marking 'sempre fff' is written in both staves.

263

mf

mf

3

3

$\text{♩} = 82 - 86$

Detailed description: This system contains measures 263 to 271. It features two staves. The upper staff has a treble clef and contains a melodic line with eighth notes. The lower staff has a bass clef and contains a rhythmic accompaniment with eighth notes. The dynamic marking 'mf' is written in both staves. A tempo marking ' $\text{♩} = 82 - 86$ ' is present. A '3' is written above the end of the system, and another '3' is written above a triplet in the lower staff.

272

f

mf

Detailed description: This system contains measures 272 to 277. It features two staves. The upper staff has a treble clef and contains a melodic line with eighth notes. The lower staff has a bass clef and contains a rhythmic accompaniment with eighth notes. The dynamic marking 'f' is written in the lower staff, and 'mf' is written in the upper staff.

278

Detailed description: This system contains measures 278 to 283. It features two staves. The upper staff has a treble clef and contains a melodic line with eighth notes. The lower staff has a bass clef and contains a rhythmic accompaniment with eighth notes. A 'N' is written above the upper staff.

284

mf

crest.

Detailed description: This system contains measures 284 to 288. It features two staves. The upper staff has a treble clef and contains a melodic line with eighth notes. The lower staff has a bass clef and contains a rhythmic accompaniment with eighth notes. The dynamic marking 'mf' is written in the lower staff, and 'crest.' is written in the upper staff.

289

m

Detailed description: This system contains measures 289 to 294. It features two staves. The upper staff has a treble clef and contains a melodic line with eighth notes. The lower staff has a bass clef and contains a rhythmic accompaniment with eighth notes. The dynamic marking 'm' is written in the lower staff.

SYMPHONIE N° 3.

Gr. Trommel. Triangel. Ruthe. Tam-tam.

Erste Abtheilung.

N° 1.

Kräftig Entschieden.

Gustav Mahler.

Gr. Tr. *f ff*

Gr. Tr. Zurückhaltend. *Molto riten.*

2	<i>p</i>	<i>pp</i> 1	2	3	4	5	6	7	8	9
		mit 2 Schwammzylinder		1 Tam-tam					sempre <i>pp</i>	
						<i>pp</i>	<i>pp</i>		<i>pp</i>	

♩ = 60
Gr. Tr. Solo 3. *Schwer und dumpf.* *sempre pp*

1 2

3 4 5 6 7 8

9 10 11 12 2 2

sempre pp

pp *pp*

(Coll. u. Bass, Fag.) *ff* Gr. Tr. *Bewegt. Rnbato.* *Nicht schleppen.* (1. Tramp.)

5 6 4

Gedehnt. *Sempre l'istesso Tempo.* Nicht alloa.

7 8 8 8 9 8 10 6 (Coll. u. Bass) *pp*

Gr. Tr. *pp* 3 *FL* 15

DANSE DE LA TERRE
Lento 3

Prestissimo

163

72

G.C.

Y U E U | E J E E | E J S S | E G.

tr. mm
P sub. sf

73
P subito sfp
molto P subito sfp
13.3 L

4 5 6
tr. mm
P subito

RR
74
1-6 2
P subito sfp

3 4 5 6
75
1-11 2
P subito

3 4 5 6
8 9
2 tr. sf

10 11 76
1-9 2 3 4 5
tr. sf

6 7 8 9
77
1-10 2 3
cresc. poco a poco

4 5 6 7 8

9 10 78
tr. sf
ff

tr. sf u.u.

Sinfonie Nr. 4 e-Moll

Triangel

$\text{♩} = 176$

I, II u. IV tacet

III

Johannes Brahms, op. 98

Allegro giocoso

The image shows a page of a musical score for the third movement of Johannes Brahms' Symphony No. 4 in E minor, Op. 98. The movement is titled "Allegro giocoso" and is marked with a tempo of $\text{♩} = 176$. The score is for Violin I, Bass, and other instruments. The key signature is E minor (three flats). The score is divided into sections labeled A through K. Section A is marked "12" and "Ob. I". Section B is marked "8" and "Pk.". Section C is marked "11" and "Viol. I". Section D is marked "11" and "Viol. I". Section E is marked "1" and "26". Section F is marked "12" and "Poco meno presto". Section G is marked "20" and "Trpt.". Section H is marked "16" and "Pk.". Section I is marked "2" and "Viol. I". Section J is marked "6" and "Ob. I". Section K is marked "Pk.". The score includes various dynamics such as *pp*, *f*, *ff*, and *f sempre*. There are also markings for "pizz." (pizzicato) and "Str." (strings). The score is written in a standard musical notation with a treble clef for Violin I and a bass clef for Bass.

